

# PALATKA OFFICE WAREHOUSE

For Sale or Lease: 4,700 +/- SF Commercial Building

1501 St. Johns Ave  
Palatka, Florida 32177



Donald G. "Beau" Maurer  
60 Ocean Blvd., Suite #15  
Atlantic Beach, Florida 32233  
Phone: (904) 370-0600  
Email: [beau@thecordellgroup.com](mailto:beau@thecordellgroup.com)



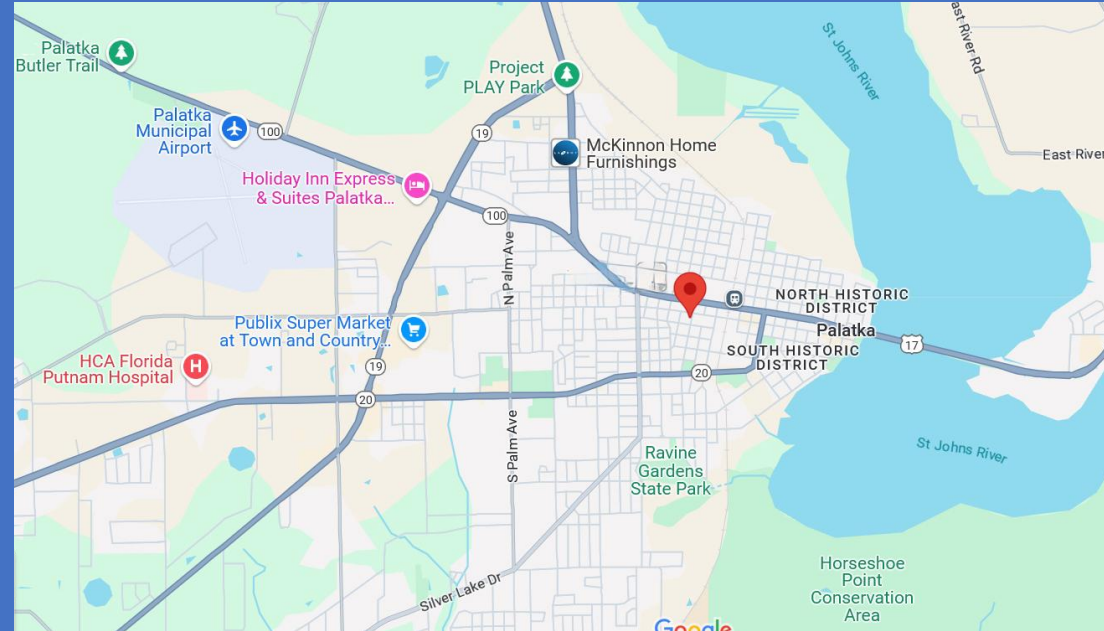
*Visit Our Website For Complete Listings*

The information contained herein has been obtained from sources believed reliable. While we do not doubt it's accuracy, we have not verified it and make no guarantee, warranty, or representation about it. It is your responsibility to independently confirm its accuracy and completeness.



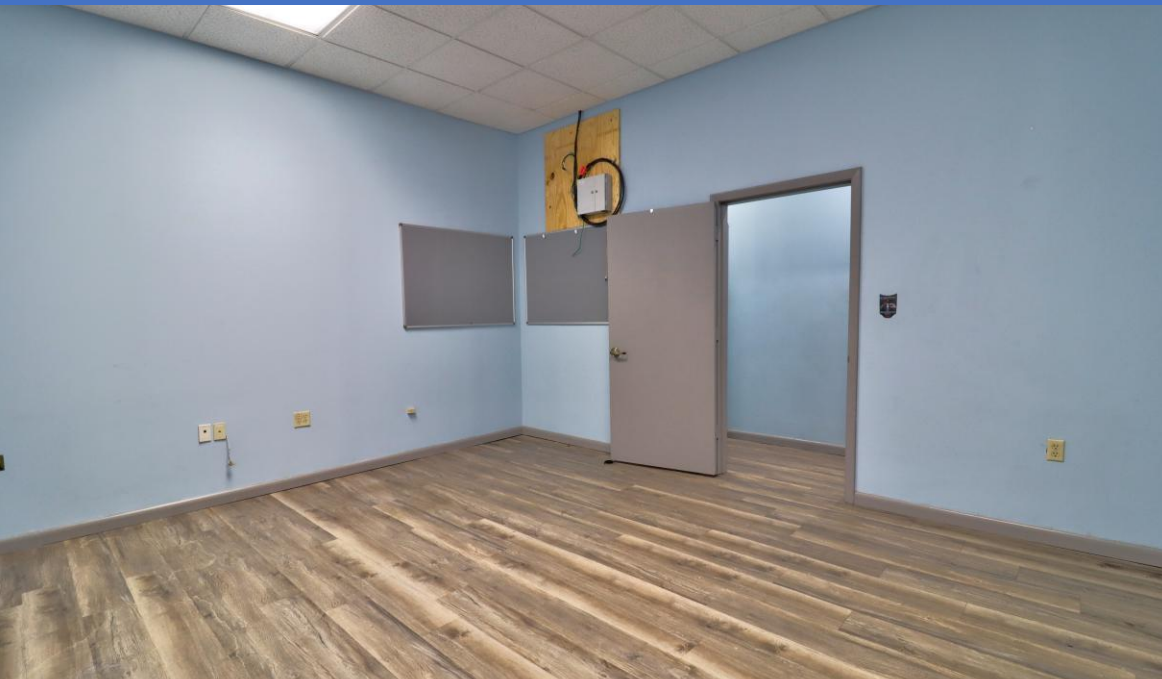
# PROPERTY DETAILS

- ➔ **Location:** St Johns Ave & S. 13<sup>th</sup> Street
- ➔ **Estimated Building Size:** 4,700 +/- SF
- ➔ **Estimated Land Size:** 14,996 +/- SF
- ➔ **Parking:** Both on site and off site
- ➔ **Grade Level Overhead Doors:** 1
- ➔ **Utilities:** Electric: FPL | Water-Sewer: City of Palatka
- ➔ **Zoning:** Commercial General Light (C-2)
- ➔ **Year built:** 1956/1992
- ➔ **Sale Price:** \$524,900
- ➔ **Lease Rate:** \$10.50 NNN
- ➔ **CAM / Opex:** \$1.96 SF - Estimated



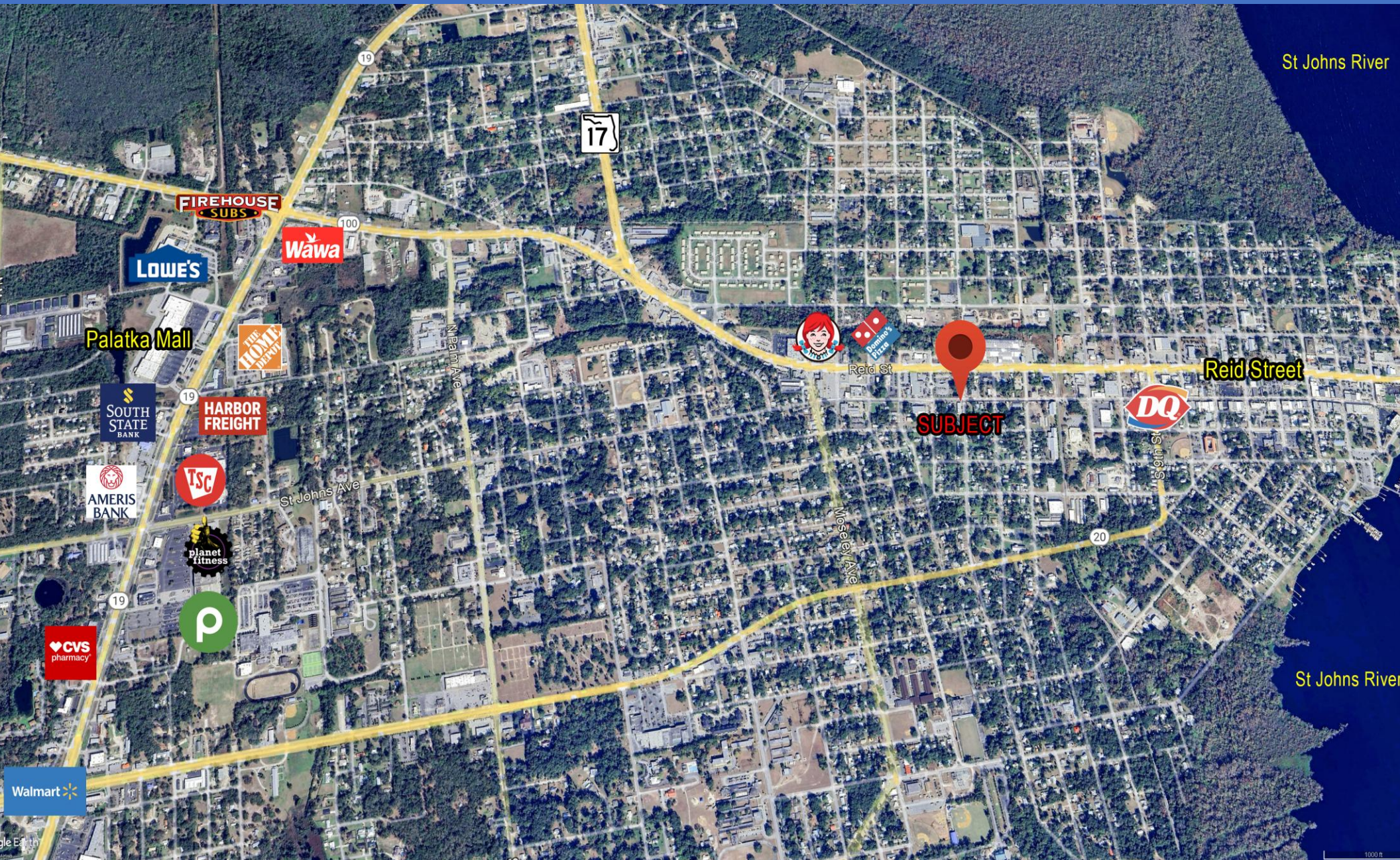


# 1501 St. Johns Avenue





# AERIAL



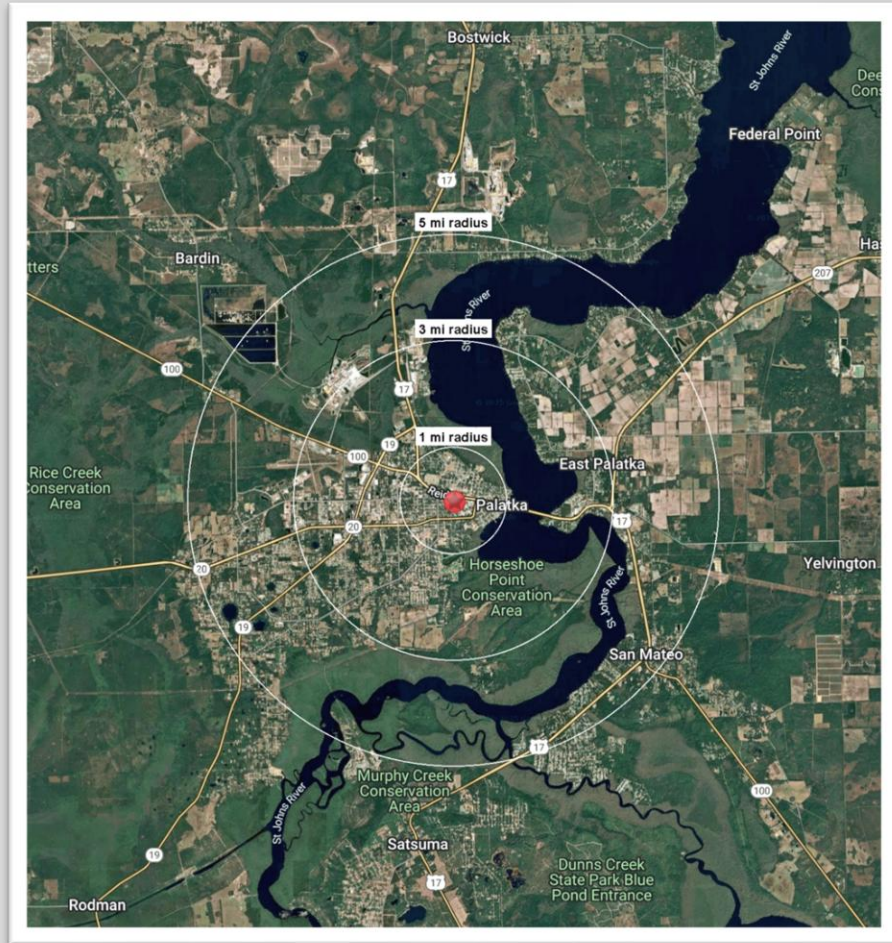
THE CORDELL GROUP  
COMMERCIAL REAL ESTATE SERVICES



# AREA DEMOGRAPHICS



**1501 St. Johns Ave, Palatka, Florida 32177**



	1 MILE	3 MILES	5 MILES
<b>2025 Population</b>	6,117	16,580	25,222
<b>2030 Projected Population</b>	6,196	16,852	25,830
<b>2025 Total Households</b>	2,405	6,564	10,004
<b>2030 Projected Households</b>	2,401	6,570	10,091
<b>Average Household Income</b>	\$47,454	\$62,083	\$68,981
<b>2025 Median Age</b>	35.9	38.3	40.3
<b>2025 Total Housing Units</b>	3,061	8,075	12,775
<b>2025 Total Businesses</b>	475	1,247	1 613

