

# FOR SALE: PUD ZONED LAND

0 Crystal Springs Road  
Jacksonville, Florida 32218



## PROPERTY DESCRIPTION

**Location:** .7 miles south of Interstate 10, on the north west corner of Crystal Springs Road and Hammond Blvd.

**Estimated Land Size:** 9.85+- acres

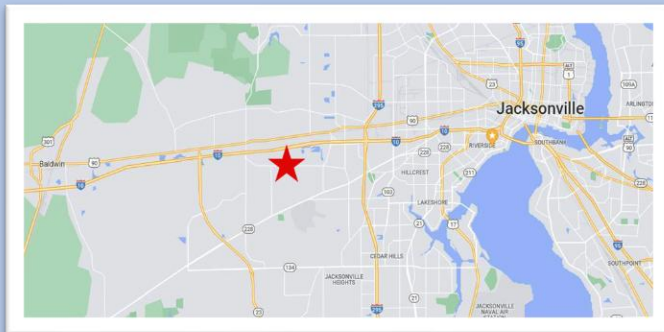
**Zoning:** PUD which allows retail, office & medical  
[Click To View PUD Ordinance](#)

**Frontage/Access/Exposure:** +-656' along north side of Crystal Springs Rd

**Water & Sewer:** [Click For JEA Availability Letter](#)

**Proximity:** Trinity Baptist Church & School & I-10

**Price:** \$2,250,000.00



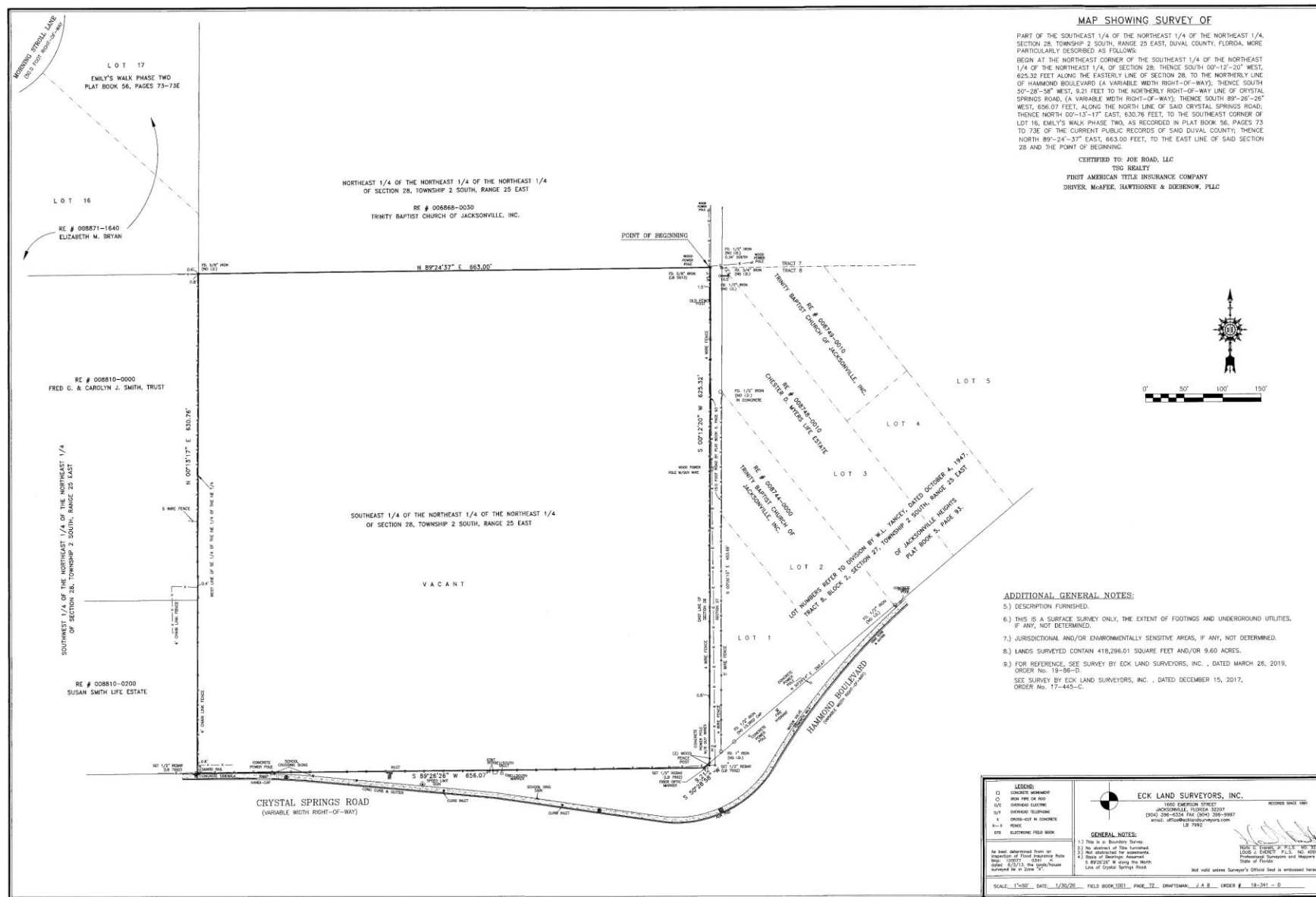
**Cord Butler**  
60 Ocean Blvd., Suite #15  
Atlantic Beach, Florida 32233  
Phone: (904) 465- 1000  
Email: [cord@thecordellgroup.com](mailto:cord@thecordellgroup.com)

**Donald G. "Beau" Maurer**  
60 Ocean Blvd., Suite #15  
Atlantic Beach, Florida 32233  
Phone: (904) 370-0600  
Email: [beau@thecordellgroup.com](mailto:beau@thecordellgroup.com)



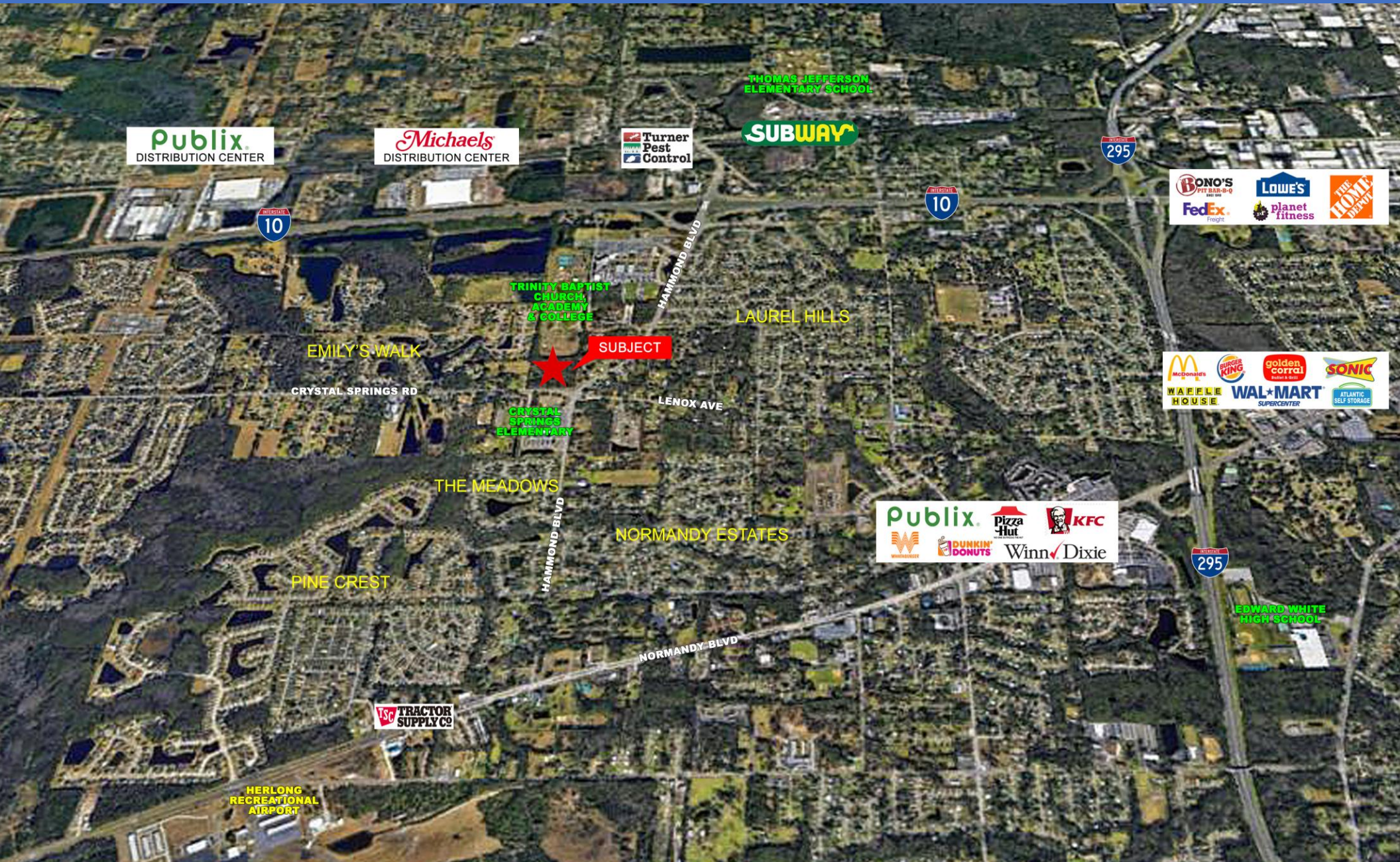
*Visit Our Website For Complete Listings*

The information contained herein has been obtained from sources believed reliable. While we do not doubt it's accuracy, we have not verified it and make no guarantee, warranty, or representation about it. It is your responsibility to independently confirm its accuracy and completeness.





# AERIAL





# TAX MAP & BOUNDARY DIMENSIONS







# PHOTOS



View From Crystal Springs Rd



View Looking North



View Looking Northeast



View Looking South



View Looking West

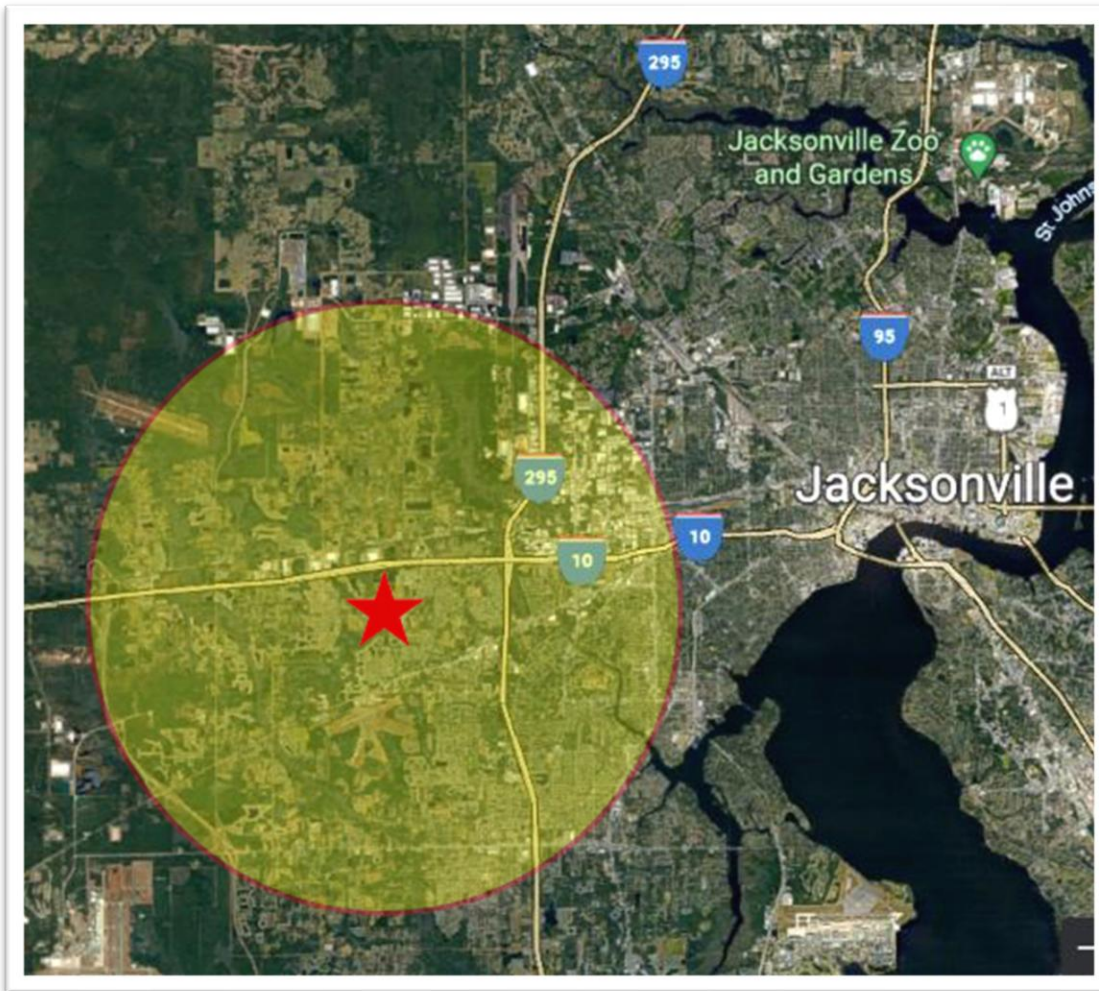


View Looking East





# AREA DEMOGRAPHICS



## 5 MILE RADIUS

2022 Population	129,956
2027 Projected Population	135,628
2022 Total Households	49,545
2027 Projected Households	51,271
2022 Average Household Income	\$77,790
2022 Median Age	35.5
2022 Total Housing Units	54,898
2022 Total Businesses	6,612



**Downtown**  
10 Minutes



**JIA Airport**  
20 Minutes



**I-10**  
2 Minutes



**I-295**  
5 Minutes